

**BUSINESS INDICATORS**AUSTRALIAN
CAPITAL
TERRITORY

EMBARGO: 11:30AM (CANBERRA TIME) FRI 20 JUL 2001

C O N T E N T S

| | <i>page</i> |
|---|-------------|
| Notes | 2 |
| Summary of findings | 3 |
| Selected business indicators | 5 |
| | |
| FEATURE ARTICLE | |
| Motor Vehicle Use in the ACT | 7 |
| | |
| TABLES | |
| 1 Business indicators | 10 |
| 2 ACT in relation to the rest of Australia | 13 |
| 3 ACT in relation to the rest of Australia — percentage changes | 14 |
| | |
| INFORMATION | |
| Index of Feature Articles published in ACT Business Indicators | 15 |

- For further information about these and related statistics, contact Nives Marelic on Canberra 02 6207 0315, or the National Information and Referral Service on 1300 135 070.

NOTES

FORTHCOMING ISSUES

| <i>ISSUE</i> | <i>RELEASE DATE</i> |
|----------------|---------------------|
| August 2001 | 17 August 2001 |
| September 2001 | 21 September 2001 |
| October 2001 | 9 November 2001 |
| November 2001 | 7 December 2001 |
| December 2001 | 11 January 2002 |
| January 2002 | 22 February 2002 |

DATA CHANGES

ABS statistical series are being impacted to varying degrees as a result of The New Tax System (TNTS), introduced in Australia from 1 July 2000. TNTS includes the removal of Wholesale Sales Tax and the introduction of a Goods and Services Tax (GST).

IMPACT OF THE NEW TAX SYSTEM ON DATA SERIES IN THIS PUBLICATION

Users of Building Approvals data should exercise caution when analysing movements in the value series over the next few months as they have been affected in a number of ways. For further information see *Building Approvals, Australia* (Cat. no. 8731.0).

Users of Capital Expenditure data should exercise caution when analysing estimates of expected expenditure for 2000–01 financial year. Businesses in the Survey of New Capital Expenditure have been asked to report expected expenditure for 2000–01 financial year based on the cost to them under TNTS. For further information see *Private New Capital Expenditure, State Estimates* (Cat. no. 5646.0).

Users of Retail data should exercise caution when analysing movements in the series over time. Estimates of retail turnover in both original and seasonally adjusted terms reflect unusually large spending ahead of the GST. The trend series attempts to measure underlying behaviour and, in the short term, this measurement may be adversely affected by an unusual influence in the original and seasonally adjusted data. For further information see *Retail Trade, Australia* (Cat. no. 8501.0).

SYMBOLS AND OTHER USAGES

| | |
|-----------------|---|
| km ² | square kilometres |
| no. | number |
| n.a. | not available |
| n.p. | not available for publication |
| p | preliminary |
| qtr | quarter |
| '000 | thousands |
| % | per cent |
| . . | not applicable |
| * | Represents data with a standard error of greater than 25% |
| ** | Represents data with a standard error of greater than 50% |
| — | Caution should be exercised when using this data. |
| — | nil or rounded to zero |

Tracy Stewart
Regional Director, Australian Capital Territory

SUMMARY OF FINDINGS

UPDATED SERIES

Series updated since the June 2001 issue are: building approvals, business expectations, housing finance, industrial disputes, job vacancies, labour force, new motor vehicle registrations, private new capital expenditure, retail turnover, tourist accommodation and wage and salary earners.

The feature article this month, on page 7, is Motor Vehicle Use in the ACT.

Labour force At June 2001, ACT trend employment fell slightly, down 0.1% from May 2001 to 167,000 people, while nationally trend employment rose by 0.1% for the same period to 9,152,200 people.

The trend estimate of unemployed people in the ACT during June 2001 increased to 10,100, up 4% compared with the previous month and up 22% from June 2000. Nationally, trend unemployment rose 1% from May 2001 to 680,000 people.

Compared with May 2001, the trend unemployment rate for the ACT increased by 0.2 percentage point to 5.7% in June 2001. The national trend unemployment rate increased by 0.1 percentage point for the same period to 6.9%.

The ACT trend participation rate for June 2001 rose slightly by 0.1 percentage point to 72.6%, while the national participation rate also rose by 0.1 percentage point, to 63.9%.

Industrial disputes For the 12 months ended March 2001 there were 34 working days lost per thousand employees in the ACT, compared with 72 days nationally.

Building approvals In May 2001 the trend number of dwelling units approved in the ACT increased to 125, up 5% from the previous month, and a fall of 23% from May 2000. Nationally, the trend number of dwelling units approved in May 2001 was up 3% from the previous month to 10,195 dwelling units.

The value of non-residential building approvals for the ACT in May 2001 was \$18 million, a decrease of 9% from the previous month. The value of total building approvals in May 2001 was \$51 million, up 34% from the previous month but a decrease of 61% from May 2000. Nationally, the value of total building approvals in May 2001 was \$3,430 million, an increase of 34% from the previous month and an increase of 3% from May 2000.

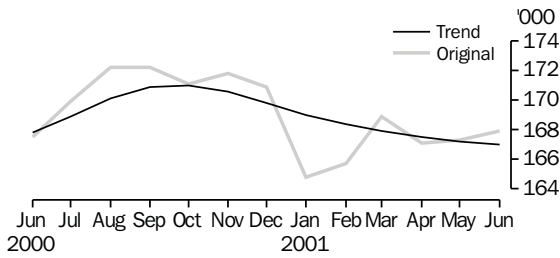
Housing finance The trend number of dwelling units financed (including refinancing) in the ACT in May 2001 was 792, a rise of 3% from the previous month. The trend estimate for the value of commitments in the ACT was \$109 million, a rise of 4% from April 2001 but a fall of 2% from May 2000.

Nationally, the trend number of dwelling units financed (including refinancing) during May 2001 was 49,599 compared with 48,575 in April 2001, while the trend estimate for the value of commitments in May 2001 increased to \$7,104 million (up 3% from the previous month).

| | |
|---------------------------------|---|
| Private new capital expenditure | Trend private new capital expenditure in the ACT in the March quarter 2001 was \$136 million, an increase of 15% from the previous quarter and 36% from the March quarter 2000. Private new capital expenditure on buildings and structures in the March quarter 2001 increased by 32% from the previous quarter to \$62 million. Equipment, plant and machinery increased by 4% from the previous quarter to \$74 million. Nationally, trend private new capital expenditure was down 3% from the previous quarter and 7% from the March quarter 2000. |
| Job vacancies | There were 2,500 job vacancies in the ACT in the May quarter 2001, a decrease of 19% from the February quarter 2001 and 17% from the May quarter 2000. Nationally, job vacancies in the May quarter 2001 decreased by 13% from the February quarter 2001 and 18% from May quarter 2000. |
| Wage and salary earners | At March quarter 2001, the trend number of wage and salary earners employed in the public and private sectors in the ACT was 157,600 persons, an increase of 2,400 persons (2%) from the December quarter 2000, and an increase of 3% compared with the corresponding quarter of the previous year. Excluding self-employed persons, 56% of wage and salary earners in the ACT were in the private sector. |
| Retail turnover | Trend retail turnover in the ACT for May 2001 was \$276 million, up slightly (0.4%) compared with the previous month. The turnover for May 2001 was an increase of 14% from the May 2000 turnover of \$242 million. Nationally, trend retail turnover increased by 1% compared with the previous month and was up 10% from the previous year. |
| Business expectations | Trading performance (operating income) from the sales of goods and services in the ACT indicates a positive expectation of 1% for the September quarter 2001. Nationally, there is an expected short-term decrease of 1% in this period. In the medium-term (June quarter 2001 to June quarter 2002), a growth of 3% in sales is expected for the ACT, whilst the national expectation is 0.4%. |
| New motor vehicle registrations | At May 2001 the trend estimate for ACT new motor vehicle registrations was 1,133, a decrease of 1% compared with the previous month. Compared with May 2000, this was a rise of 1%. Nationally, the trend for total new motor vehicle registrations fell by 2% from the previous month but was up 4% from May 2000. |
| Tourist accommodation | At March quarter 2001 the room occupancy rate for ACT hotels, motels, serviced apartments and guest houses was 59.4%, an increase of 0.4 percentage point from the previous quarter, but down 1.5 percentage points from the March quarter 2000. Nationally, in the March quarter 2001, the room occupancy rate was 57.7%, a decrease of 1.1 percentage points from the previous quarter, and down 0.5 percentage point from the March quarter 2000. |

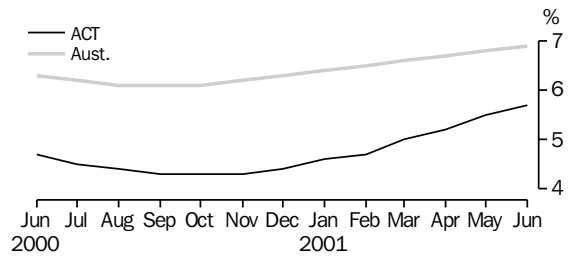
SELECTED BUSINESS INDICATORS

EMPLOYED PERSONS



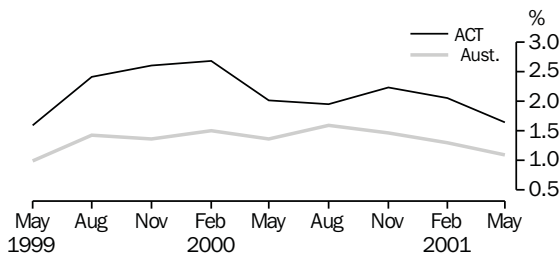
Source: Labour Force, Australia (Cat. no. 6202.0).

UNEMPLOYMENT RATE: trend series



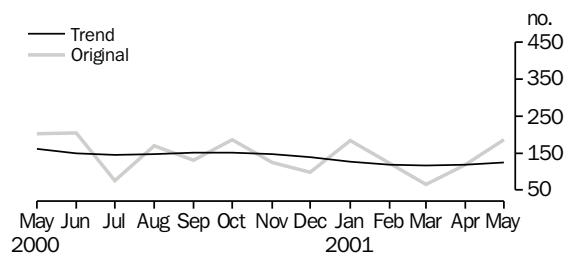
Source: Labour Force, Australia (Cat. no. 6202.0).

JOB VACANCY RATES



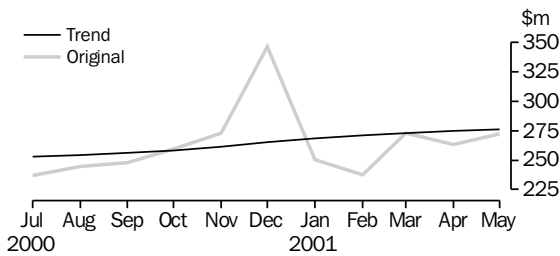
Source: Job Vacancies, Australia (Cat. no. 6354.0).

BUILDING APPROVALS: Dwelling units approved



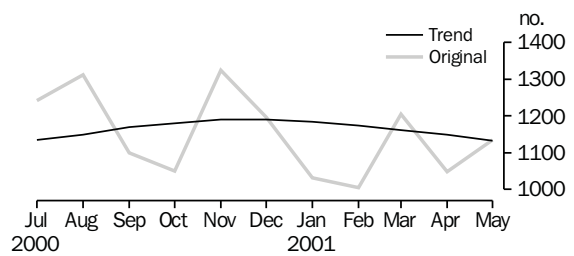
Source: Building Approvals, Australia (Cat. no. 8731.0).

RETAIL TRADE: Monthly turnover



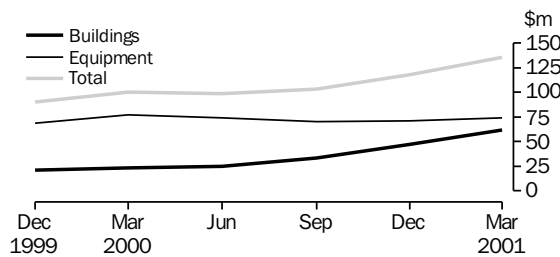
Source: Retail Trade, Australia (Cat. no. 8501.0).

NEW MOTOR VEHICLE REGISTRATIONS



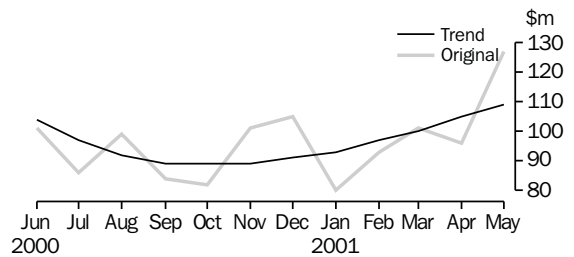
Source: New Motor Vehicle Registrations, Australia (Cat. no. 9301.0).

PRIVATE NEW CAPITAL EXPENDITURE: Trend



Source: Private New Capital Expenditure (Cat. no. 5646.0).

HOUSING FINANCE



Source: Housing Finance, Australia (Cat. no. 5609.0).

INTRODUCTION

The Survey of Motor Vehicle Use (SMVU) was conducted in four quarterly sample surveys over the period 1 November 1999 to 31 October 2000. The reference year for this SMVU is different from the two previous SMVUs which were conducted for the period 1 August to 31 July.

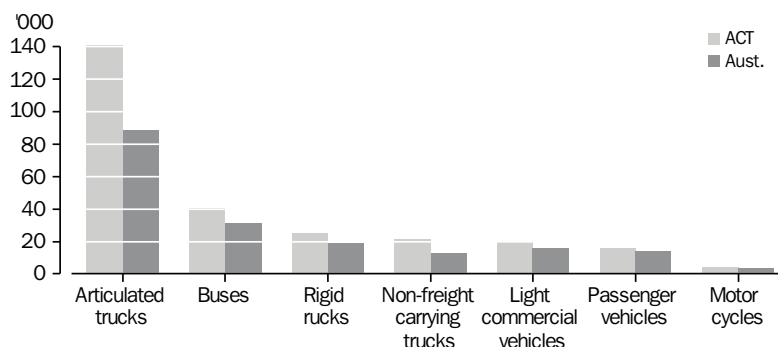
Distance travelled

Vehicles registered in the ACT recorded the highest average distance travelled among all States and Territories. For the year ended 31 October 2000, ACT registered vehicles averaged 16,500 kilometres per vehicle, compared with an average of 15,800 kilometres in 1998. For the other States and Territories, vehicles registered in Victoria and the Northern Territory travelled the next highest average distance, at 15,600 kilometres for each. South Australia recorded the lowest average distance travelled of 13,100 kilometres for the survey period ended 31 October 2000. The average distance travelled by all vehicles in Australia was 14,800 kilometres.

Passenger vehicles registered in the ACT recorded the highest average distance travelled for all States and Territories of 16,200 kilometres. The ACT was followed by Victorian passenger vehicles with an average of 15,200 kilometres. Articulated trucks travelled the highest average kilometres, with those registered in the ACT travelling an average of 140,800 kilometres, significantly greater than the second ranked State, South Australia, at 95,600 kilometres. The Australian average for articulated trucks was 88,900 kilometres.

The average kilometres travelled by all types of vehicles registered in the ACT were higher than the national average as shown in the following graph:

AVERAGE KILOMETRES TRAVELLED BY TYPE OF VEHICLE



Source: ABS, Survey of Motor Vehicle Use, Australia, 12 months ended 31 October 2000 (Cat. No. 9208.0).

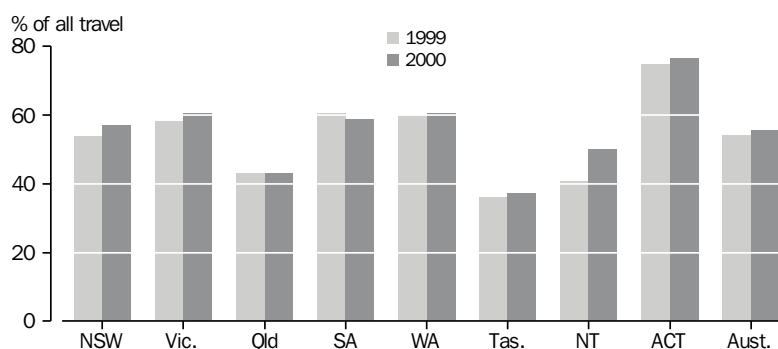
Total kilometres travelled

For the period ended 31 October 2000, vehicles registered in the ACT travelled 3,200 million kilometres. This represents a 5% increase from the previous survey, during which registered vehicles travelled 3,058 million kilometres. The 1999–2000 data also showed an increase in the number of vehicles on the road, from 191,518 in 1999 to 193,855 in 2000 (up 1%).

Passenger vehicles contributed 85% (2,731 million kilometres) to total kilometres travelled, freight-carrying vehicles 13% (414 million kilometres), buses 1% (31 million kilometres), motor cycles 1% (23 million kilometres), while non-freight carrying trucks travelled *2 million kilometres.

Area of operation In the 12 months ended 31 October 2000, an estimated 77% (2,450 million kilometres) of the total distance travelled by all vehicles registered in the ACT was within the capital city. This was the highest percentage of all States/Territories. The ACT also had the highest percentage of distance travelled interstate of 23% (751 million kilometres). This compares with the national average of 56% travelled within the capital city of the State/Territory of registration and 5% travelled interstate.

TRAVEL WITHIN CAPITAL CITY OF STATE/TERRITORY OF REGISTRATION



Source: ABS, Survey of Motor Vehicle Use, 12 months ended 31 July 1999 and 31 October 2000 (Cat. No. 9208.0).

Private use of vehicles Private use of vehicles in the ACT accounted for an estimated 75% (2,395 million kilometres) of the total distance travelled in the 12 months ended 31 October 2000. This included travel to and from work (37%) and personal and other purposes (63%). This compares with the national average of 66% for private use of vehicles. The average kilometres travelled by ACT vehicles to and from work (7,900 kilometres) and for personal and other purposes (9,200 kilometres) were higher than the national averages of 7,100 kilometres and 8,200 kilometres respectively.

Business use of vehicles Business use of vehicles in the ACT accounted for an estimated 25% (805 million kilometres) of the total distance travelled in the 12 months ended 31 October 2000. This compares with the national average of 34% business use of vehicles. The average distance travelled by ACT vehicles for business purposes was 11,700 kilometres, compared with 13,900 nationally.

Freight vehicle use Freight vehicles registered in the ACT travelled the highest average laden business distance of 20,300 kilometres, followed by Victoria with an average of 18,500 kilometres.

In the 12 months ended 31 October 2000, freight vehicles in the ACT travelled an estimated 257 million kilometres while laden and carried 9 million tonnes of goods. This represents an increase of 15% from the 223 million laden kilometres that freight vehicles travelled in the year ended 31 July 1999 and an increase of 13% in the total tonnes carried during this period.

Freight vehicle use *continued* Total tonne-kilometres is the number of tonnes moved, multiplied by the distance travelled in kilometres. A total of 957 million tonne-kilometres was travelled by freight vehicles in the ACT, an increase of 9 million tonne-kilometres (1%) from the period ending 31 July 1999. Articulated trucks recorded the largest proportion of tonne-kilometres at 76% (725 million tonne-kilometres), rigid trucks 16% (154 million tonne-kilometres) and light commercial vehicles 8% (79 million tonne-kilometres).

Bus use In the ACT, buses travelled 30 million kilometres in the 12 months ended 31 October 2000. Route services accounted for 53% (16 million kilometres) of the total distance travelled, dedicated school bus services contributed 23% (7 million kilometres), tour services accounted for 17% (*5 million kilometres) and charter services 7% (*2 million kilometres).

The average distance travelled by buses in the ACT was 44,000 kilometres, compared with 49,000 kilometres in July 1999. Nationally, the average distance travelled by buses was 34,700 kilometres in October 2000 compared with 38,000 kilometres in July 1999.

| Indicator | Unit | ACT | | | Aust. | | |
|--|------|---------------|-----------------|---------------------------|---------------|-----------------|---------------------------|
| | | % change from | | | % change from | | |
| | | Latest figure | Previous period | Same period previous year | Latest figure | Previous period | Same period previous year |
| POPULATION, VITALS AND LABOUR | | | | | | | |
| POPULATION, Dec qtr 2000 | '000 | 312.4 | 0.3 | 0.8 | 19 277.1 | 0.3 | 1.2 |
| Natural increase | no. | 738 | 5.6 | 11.8 | 29 920 | 7.6 | -5.8 |
| Net migration | no. | 100 | 1 150.0 | -133.0 | 28 058 | -18.2 | 0.3 |
| Total growth | no. | 838 | 18.5 | 134.7 | 57 978 | -6.6 | -3.0 |
| LABOUR FORCE | | | | | | | |
| Original series, Jun 2001 | | | | | | | |
| Employed | '000 | 167.9 | 0.4 | 0.2 | 9 164.7 | 0.3 | 1.0 |
| Unemployed | '000 | 9.8 | 2.1 | 18.1 | 654.3 | -2.6 | 12.3 |
| Unemployment rate | % | 5.5 | 0.1 | 0.8 | 6.7 | -0.2 | 0.7 |
| Participation rate | % | 72.8 | 0.3 | 0.3 | 63.7 | — | 0.2 |
| Long-term unemployed, May 2001 | no. | 2 290 | 23.2 | 10.3 | 162 933 | 1.9 | -10.7 |
| Long-term unemployed as percentage of total unemployed, May 2001 | % | 23.8 | 4.8 | 2.6 | 24.3 | 0.4 | -4.1 |
| Trend series, Jun 2001 | | | | | | | |
| Employed | '000 | 167.0 | -0.1 | -0.5 | 9 152.2 | 0.1 | 0.7 |
| Unemployed | '000 | 10.1 | 4.1 | 21.7 | 680.0 | 1.3 | 11.8 |
| Unemployment rate | % | 5.7 | 0.2 | 1.0 | 6.9 | 0.1 | 0.6 |
| Participation rate | % | 72.6 | 0.1 | -0.1 | 63.9 | 0.1 | 0.1 |
| WAGE AND SALARY EARNERS, Mar qtr 2001 | | | | | | | |
| Number employed, trend series | | | | | | | |
| Private sector | '000 | 87.9 | 2.4 | 5.1 | 5 922.6 | 0.1 | 3.4 |
| Public sector | '000 | 69.7 | 0.4 | 0.7 | 1 451.3 | -0.1 | -0.8 |
| Total | '000 | 157.6 | 1.5 | 3.1 | 7 373.9 | 0.1 | 2.5 |
| Gross earnings, original series | | | | | | | |
| Private sector | \$m | 660.7 | 0.4 | 9.4 | 49 862.3 | -4.5 | 7.8 |
| Public sector | \$m | 948.3 | 12.6 | 2.9 | 15 719.3 | -1.3 | 1.6 |
| Total | \$m | 1 609.0 | 7.2 | 5.5 | 65 581.7 | -3.8 | 6.2 |
| JOB VACANCIES, May qtr 2001 | '000 | 2.5 | -19.4 | -16.7 | 83.4 | -12.7 | -18.3 |
| INDUSTRIAL DISPUTES IN PROGRESS, March 2001 | | | | | | | |
| Working days lost | '000 | 0.2 | — | 100.0 | 35.3 | 50.9 | -37.7 |
| Days lost per '000 employees (year ended March 2001) | no. | 34.0 | 100.0 | 13.3 | 72.0 | -5.3 | -21.7 |
| HOUSING AND BUILDING ACTIVITY | | | | | | | |
| HOUSING FINANCE, May 2001 | | | | | | | |
| Secured commitments to individuals for | | | | | | | |
| Original series | | | | | | | |
| Construction of dwellings | \$m | 7.0 | — | -53.3 | 900.0 | 41.3 | 13.2 |
| Purchase of new dwellings | \$m | 8.0 | 33.3 | 100.0 | 300.0 | 27.7 | 28.8 |
| Purchase of established dwellings(a) | \$m | 112.0 | 34.9 | 13.1 | 7 118.0 | 25.8 | 26.7 |
| Refinancing | \$m | 21.0 | 61.5 | 75.0 | 1 745.0 | 30.6 | 37.1 |
| Total housing commitments | \$m | 127.0 | 32.3 | 7.6 | 8 318.0 | 27.4 | 25.2 |
| Seasonally adjusted series | | | | | | | |
| Total housing commitments | \$m | 120.0 | 11.1 | 9.1 | 7 454.0 | 7.1 | 26.7 |
| Trend series | | | | | | | |
| Total housing commitments | \$m | 109.0 | 3.8 | -1.8 | 7 104.0 | 3.4 | 23.2 |
| Dwelling units financed | no. | 792 | 2.9 | -5.1 | 49 599 | 2.1 | 16.6 |
| PRICE INDEX | | | | | | | |
| Established house price index, Mar qtr 2001 | no. | 150.5 | 2.8 | 7.5 | 153.9 | 2.2 | 6.9 |
| BUILDING APPROVALS, May 2001 | | | | | | | |
| Original series | | | | | | | |
| Dwelling units | no. | 187 | 57.1 | -7.9 | 12 880 | 42.4 | -12.7 |
| Value of new residential | \$m | 28.7 | 93.9 | -0.3 | 1 709.9 | 38.8 | -10.2 |
| Value of residential alterations and additions(b) | \$m | 0.1 | — | — | 332.8 | 28.4 | -6.3 |
| Value of non-residential | \$m | 18.1 | -8.6 | -81.1 | 1 387.1 | 28.9 | 27.7 |
| Value of total building | \$m | 50.9 | 33.9 | -60.7 | 3 429.8 | 33.6 | 2.5 |
| Trend series | | | | | | | |
| Dwelling units | no. | 125 | 5.0 | -22.8 | 10 195 | 3.1 | -18.1 |

(a) Includes refinancing.

(b) Includes conversion jobs.

| Indicator | Unit | ACT | | | Aust. | | |
|--|------|---------------|-----------------|---------------------------|---------------|-----------------|---------------------------|
| | | % change from | | | % change from | | |
| | | Latest figure | Previous period | Same period previous year | Latest figure | Previous period | Same period previous year |
| HOUSING AND BUILDING ACTIVITY continued | | | | | | | |
| BUILDING COMMENCEMENTS, Dec qtr 2000 | | | | | | | |
| New houses | no. | 307 | 30.6 | -22.5 | 19 308 | 2.1 | -35.6 |
| Value of houses commenced | \$m | 47.5 | 31.2 | -9.2 | 2 737.6 | 2.5 | -29.5 |
| Value of non-residential building commenced | \$m | 19.6 | -30.5 | -43.5 | 2 697.4 | -9.6 | -9.5 |
| Value of total commencements | \$m | 102.0 | 13.2 | -29.9 | 7 543.1 | -2.9 | -17.2 |
| ENGINEERING CONSTRUCTION, Dec qtr 2000 | | | | | | | |
| Private sector | | | | | | | |
| Value of work commenced | \$m | 10.8 | -54.8 | -46.0 | 3 116.5 | 33.4 | 2.2 |
| Value of work done | \$m | 21.6 | -34.9 | -23.4 | 2 687.1 | -3.3 | -18.2 |
| Value of work yet to be done | \$m | 26.1 | -40.5 | 22.0 | 5 069.3 | 2.0 | -2.8 |
| Public sector | | | | | | | |
| Value of work done | \$m | 20.4 | -8.1 | -14.6 | 1 660.6 | -1.8 | -13.4 |
| PRICES, WAGES AND CONSUMER SPENDING | | | | | | | |
| CONSUMER PRICE INDEX, Mar qtr 2001(a) | | | | | | | |
| Food | no. | 139.4 | 2.6 | 6.7 | 137.6 | 3.1 | 6.6 |
| Housing(b) | no. | 108.0 | 0.8 | 9.1 | 108.2 | 0.5 | 7.4 |
| Transportation(b) | no. | 138.8 | -0.4 | 2.6 | 136.7 | 0.2 | 5.1 |
| All groups | no. | 132.2 | 0.8 | 5.8 | 132.7 | 1.1 | 6.0 |
| AVERAGE WEEKLY EARNINGS, Feb 2001 | | | | | | | |
| Full-time adult ordinary time earnings | | | | | | | |
| Original series | | | | | | | |
| Males | \$ | 1 017.0 | -0.1 | 5.7 | 858.3 | 1.0 | 4.1 |
| Females | \$ | 850.1 | -0.7 | 5.0 | 728.4 | 1.3 | 5.4 |
| Persons | \$ | 933.5 | -0.6 | 4.4 | 810.6 | 1.0 | 4.6 |
| Trend series | | | | | | | |
| Males | \$ | 1 020.4 | 1.1 | 5.9 | 857.2 | 0.7 | 4.2 |
| Females | \$ | 850.7 | 0.5 | 4.0 | 727.2 | 1.2 | 5.3 |
| Persons | \$ | 937.8 | 0.7 | 4.3 | 809.7 | 0.8 | 4.7 |
| WAGE COST INDEX, Mar qtr 2001(c) | | | | | | | |
| Public sector | no. | 110.0 | 0.8 | 3.5 | 112.6 | 1.3 | 3.8 |
| Private sector | no. | 111.6 | 0.8 | 4.1 | 111.4 | 0.9 | 3.6 |
| Total | no. | 110.6 | 0.7 | 3.8 | 111.7 | 1.0 | 3.7 |
| RETAIL TURNOVER, May 2001 | | | | | | | |
| Trend series | | | | | | | |
| Food retailing | \$m | 100.8 | 0.4 | 13.1 | 5 374.3 | 0.8 | 10.1 |
| Department stores | \$m | 26.6 | — | 3.1 | 1 124.7 | 0.1 | 3.2 |
| Hospitality and services | \$m | 48.8 | 1.0 | 35.2 | 2 391.9 | 0.9 | 14.5 |
| All other retailing | \$m | 99.8 | 0.3 | 9.7 | 4 550.8 | 0.6 | 9.3 |
| Total | \$m | 276.0 | 0.4 | 14.0 | 13 441.7 | 0.7 | 9.9 |

(a) Base year: 1989–90 = 100.0.

(b) The 14th Series Australian Consumer Price Index was introduced September quarter 2000. Some changes include an updated commodity classification and weighting pattern and changes in composition of some groups. For more details of changes, refer to *Information Paper: Introduction of the 14th Series Australian Consumer Price Index* (Cat. no. 6456.0) released 29 September 2000.

(c) Base of each index is September quarter 1997 = 100.0.

| Indicator | Unit | ACT | | | Aust. | | |
|---|--------|---------------|-----------------|---------------------------|---------------|-----------------|---------------------------|
| | | % change from | | | % change from | | |
| | | Latest figure | Previous period | Same period previous year | Latest figure | Previous period | Same period previous year |
| | | | | | | | |
| TOURIST ACCOMMODATION, Mar qtr 2001 | | | | | | | |
| Original series | | | | | | | |
| Room nights occupied | '000 | 267.5 | -1.6 | -1.4 | 10 188.5 | -3.4 | 1.0 |
| Room occupancy rate | % | 59.4 | 0.4 | -1.5 | 57.7 | -1.1 | -0.5 |
| Guest nights | '000 | 454.9 | -0.9 | 2.5 | 18 460.7 | -1.7 | 2.4 |
| Guest arrivals | '000 | 209.3 | 7.6 | 4.7 | 8 031.3 | -2.1 | 1.3 |
| Takings from accommodation | \$'000 | 29 452.0 | 1.7 | 7.9 | 1 191 842.0 | -3.9 | 9.5 |
| NEW MOTOR VEHICLE REGISTRATIONS, May 2001 | | | | | | | |
| Original series | no. | 1 135 | 8.2 | -4.2 | 65 510 | 14.3 | 2.1 |
| Seasonally adjusted series | no. | 1 084 | -11.1 | -4.1 | 61 898 | -5.5 | 3.7 |
| Trend series | no. | 1 133 | -1.4 | 1.2 | 62 238 | -1.5 | 3.6 |
| STATE ACCOUNTS, Mar qtr 2001 | | | | | | | |
| Trend series (chain volume measure)(a)(b) | | | | | | | |
| General government final consumption expenditure | \$m | 2 358 | -1.3 | -4.3 | 29 640 | 0.8 | 2.2 |
| Household final consumption expenditure | \$m | 1 797 | 1.1 | 4.7 | 95 936 | 1.1 | 3.2 |
| Private gross fixed capital formation | \$m | 326 | -4.1 | -21.1 | 28 026 | -3.2 | -11.2 |
| Public gross fixed capital formation | \$m | 209 | -7.1 | -13.6 | 6 735 | 0.5 | -1.0 |
| State final demand | \$m | 4 696 | -0.7 | -3.1 | 160 322 | 0.2 | — |
| GROSS STATE PRODUCT (trend, chain volume measures), 1999–2000(b) | | | | | | | |
| | \$m | 12 669 | 4.9 | .. | 620 963 | 4.3 | .. |
| PRIVATE NEW CAPITAL EXPENDITURE, Mar qtr 2001 | | | | | | | |
| Original series (at current prices) | | | | | | | |
| Buildings and structures | \$m | 51 | 6.3 | 142.9 | 1 911 | -30.4 | -30.9 |
| Equipment, plant and machinery | \$m | 66 | -13.2 | -7.0 | 6 929 | -10.3 | -0.2 |
| Total | \$m | 117 | -5.6 | 27.2 | 8 841 | -15.6 | -8.9 |
| Trend series (at current prices) | | | | | | | |
| Buildings and structures | \$m | 62 | 31.9 | 169.6 | 2 102 | -14.0 | -25.8 |
| Equipment, plant and machinery | \$m | 74 | 4.2 | -3.9 | 7 612 | 1.2 | -0.2 |
| Total | \$m | 136 | 15.3 | 36.0 | 9 714 | -2.5 | -7.1 |
| BUSINESS EXPECTATIONS, TRADING PERFORMANCE, OPERATING INCOME | | | | | | | |
| Short term, expected change previous quarter, Sep qtr 2001 | % | 1.0 | .. | .. | -1.2 | .. | .. |
| Medium term, expected change previous year, Jun qtr 2002 | % | 2.5 | .. | .. | 0.4 | .. | .. |

(a) Quarterly state final demand details are released as a special data service (Cat. no. 5206.0.40.001).

(b) Reference year for chain volume measures is 1998–99.

Source: Australian Demographic Statistics (Cat. no. 3101.0); Australian National Accounts: Quarterly State Details (Cat. no. 5206.0.40.001); Average Weekly Earnings, States and Australia (Cat. no. 6302.0); Building Activity, Australia (Cat. no. 8752.0); Building Approvals, Australia (Cat. no. 8731.0); Consumer Price Index (Cat. no. 6401.0); Housing Finance, Australia (Cat. no. 5609.0); House Price Indexes (Cat. no. 6416.0); Industrial Disputes, Australia (Cat. no. 6321.0); Job Vacancies, Australia (Cat. no. 6354.0); Labour Force, Australia, Preliminary (Cat. no. 6202.0); New Motor Vehicle Registrations, Australia Preliminary (Cat. no. 9301.0); Private New Capital Expenditure, State Estimates (Cat. no. 5646.0); Retail Trade, Australia (Cat. no. 8501.0); Tourist Accommodation, Australia (Cat. no. 8635.0); Wage Cost Index, Australia (Cat. no. 6345.0).

| Indicator | Unit | Latest period | NSW | Vic. | Qld | SA | WA | Tas. | NT | ACT | Aust. |
|---|-------|---------------|---------|---------|---------|---------|---------|--------|-------|--------|----------|
| POPULATION | '000 | Dec qtr 00 | 6 502.6 | 4 797.4 | 3 597.2 | 1 500.5 | 1 897.4 | 470.1 | 196.3 | 312.4 | 19 277.1 |
| LABOUR FORCE, trend series | | | | | | | | | | | |
| Employed persons | '000 | Jun 01 | 3 064.9 | 2 315.6 | 1 696.9 | 676.0 | 936.6 | 198.6 | 97.0 | 167.0 | 9 152.2 |
| Unemployment rate | % | Jun 01 | 5.9 | 6.3 | 9.0 | 7.4 | 7.7 | 8.5 | 7.0 | 5.7 | 6.9 |
| WAGE AND SALARY EARNERS, trend series | | | | | | | | | | | |
| Private sector | '000 | Mar qtr 01 | 1 935.1 | 1 627.9 | 1 050.1 | 423.7 | 619.1 | 118.9 | 53.9 | 87.9 | 5 922.6 |
| Public sector | '000 | Mar qtr 01 | 459.6 | 305.5 | 291.9 | 111.7 | 150.8 | 40.9 | 22.7 | 69.7 | 1 451.3 |
| Total | '000 | Mar qtr 01 | 2 394.7 | 1 933.4 | 1 342.0 | 535.4 | 769.9 | 159.8 | 76.6 | 157.6 | 7 373.9 |
| STATE ACCOUNTS | | | | | | | | | | | |
| Gross state product (chain volume measures)(a) | \$m | 1999-00 | 221 375 | 157 915 | 103 691 | 41 381 | 66 525 | 11 367 | 6 466 | 12 669 | 620 963 |
| PRIVATE NEW CAPITAL EXPENDITURE | | | | | | | | | | | |
| Total (at current prices), trend series | \$m | Mar qtr 01 | 3 329 | 2 459 | 1 391 | 707 | 1 372 | 123 | 206 | 136 | 9 714 |
| BUILDING APPROVALS | | | | | | | | | | | |
| Dwelling units approved, original series | no. | May 01 | 3 483 | 3 668 | 2 970 | 709 | 1 598 | 134 | 131 | 187 | 12 880 |
| Dwelling units approved, trend series | no. | May 01 | 2 804 | 3 082 | 2 131 | 601 | 1 234 | 105 | 93 | 125 | 10 195 |
| Value of non-residential building approved, original series | \$m | May 01 | 266.1 | 517.2 | 270.1 | 95.7 | 157.9 | 26.7 | 35.3 | 18.1 | 1 387.1 |
| Value of all buildings approved, original series | \$m | May 01 | 880.1 | 1 162.9 | 669.5 | 191.8 | 373.2 | 45.6 | 55.8 | 50.9 | 3 429.8 |
| ENGINEERING CONSTRUCTION, original series | | | | | | | | | | | |
| Value of engineering construction work done | \$m | Dec qtr 00 | 1 451.2 | 759.2 | 1 168.2 | 263.8 | 563.4 | 53.5 | 46.4 | 42.0 | 4 347.7 |
| AVERAGE WEEKLY EARNINGS, trend series | | | | | | | | | | | |
| Full-time adult ordinary time earnings | \$ | Feb 01 | 844.8 | 790.0 | 762.4 | 772.8 | 828.7 | 738.1 | 811.9 | 937.8 | 809.7 |
| RETAIL TRADE TURNOVER, trend series | | | | | | | | | | | |
| | \$m | May 01 | 4 640.7 | 3 233.6 | 2 548.8 | 993.9 | 1 306.8 | 295.5 | 136.9 | 276.0 | 13 441.7 |
| TOURIST ACCOMMODATION, original series | | | | | | | | | | | |
| Room nights occupied | '000 | Mar qtr 01 | 3 421.1 | 1 787.2 | 2 635.2 | 547.1 | 942.7 | 335.1 | 252.6 | 267.5 | 10 188.5 |
| Room occupancy rate | % | Mar qtr 01 | 57.9 | 62.1 | 55.9 | 58.4 | 54.4 | 68.2 | 44.9 | 59.4 | 57.7 |
| NEW MOTOR VEHICLE REGISTRATIONS, trend series | | | | | | | | | | | |
| | no. | May 01 | 20 772 | 17 166 | 11 852 | 3 988 | 5 540 | 1 208 | 579 | 1 133 | 62 238 |
| | Unit | Latest period | — | — | — | — | — | — | — | — | — |
| CONSUMER PRICE INDEX(b) | | | | | | | | | | | |
| Food | no. | Mar qtr 01 | 139.2 | 136.8 | 137.1 | 139.4 | 135.2 | 134.3 | 134.8 | 139.4 | 137.6 |
| Housing | no. | Mar qtr 01 | 116.5 | 99.1 | 112.8 | 104.4 | 101.1 | 106.9 | 123.3 | 108.0 | 108.2 |
| Transportation | no. | Mar qtr 01 | 138.4 | 136.2 | 134.5 | 137.0 | 136.0 | 131.4 | 131.9 | 138.8 | 136.7 |
| All Groups | no. | Mar qtr 01 | 134.0 | 132.2 | 132.7 | 134.1 | 129.6 | 132.1 | 130.7 | 132.2 | 132.7 |
| AVERAGE RETAIL PRICES | | | | | | | | | | | |
| Milk, supermarket sales (1 litre) | cents | Mar qtr 01 | 135 | 145 | 141 | 135 | 143 | 126 | 151 | 126 | .. |
| Bread, white loaf, sliced, supermarket sales (650g)(c) | cents | Mar qtr 01 | 247 | 256 | 234 | 232 | 235 | 251 | 236 | 245 | .. |
| Beef, rump steak (1kg) | cents | Mar qtr 01 | 1 318 | 1 201 | 1 164 | 1 289 | 1 252 | 1 154 | 1 219 | 1 337 | .. |
| Chicken, frozen (1kg) | cents | Mar qtr 01 | 373 | 377 | 338 | 384 | 369 | 370 | 412 | 384 | .. |
| Potatoes (1kg) | cents | Mar qtr 01 | 127 | 160 | 148 | 93 | 153 | 125 | 141 | 137 | .. |
| Coffee, instant (150g jar) | cents | Mar qtr 01 | 607 | 607 | 550 | 582 | 680 | 694 | 586 | 618 | .. |
| Scotch nip, public bar (30ml) | cents | Mar qtr 01 | 381 | 368 | 317 | 400 | 419 | 312 | 376 | 321 | .. |
| Private motoring petrol (1 litre) | | | | | | | | | | | |
| Super grade(d) | cents | Mar qtr 01 | 94.5 | 93.7 | 83.3 | 93.4 | 93.0 | 96.8 | 101.7 | 97.3 | .. |
| Unleaded | cents | Mar qtr 01 | 91.3 | 90.6 | 80.2 | 90.4 | 89.9 | 94.1 | 98.6 | 94.3 | .. |

(a) Experimental series. Users are cautioned these estimates are derived indirectly by calculating a deflator from the expenditure components of the state series concerned. Therefore, in general, the sum of the state estimates does not equal the estimates for Australia. Reference year for chain volume measures is 1998-99.

(b) Base year: 1989-90 = 100.0. The 14th Series Australian Consumer Price Index was introduced September quarter 2000. Some changes include an updated commodity classification and weighting pattern and changes in composition of some groups. For more details of changes, refer to *Information Paper: Introduction of the 14th Series Australian Consumer Price Index* (Cat. no. 6456.0) released 29 September 2000.

(c) 680g in Hobart and Darwin.

(d) Includes lead replacement petrol where applicable.

| Indicator | Latest period | NSW | Vic. | Qld | SA | WA | Tas. | NT | ACT | Aust. |
|---|---------------|------|-------|-------|-------|-------|-------|-------|-------|-------|
| POPULATION | Dec qtr 00 | 0.3 | 0.3 | 0.4 | 0.1 | 0.3 | — | 0.1 | 0.3 | 0.3 |
| LABOUR FORCE, trend series | | | | | | | | | | |
| Employed persons | Jun 01 | 0.2 | — | 0.1 | 0.1 | -0.2 | -0.3 | 0.9 | -0.1 | 0.1 |
| Unemployment rate | Jun 01 | — | — | 0.1 | — | 0.3 | — | 0.5 | 0.2 | 0.1 |
| WAGE AND SALARY EARNERS, trend series | | | | | | | | | | |
| Private sector | Mar qtr 01 | -1.1 | 1.8 | 1.4 | -0.5 | 2.7 | 2.7 | -2.0 | 2.4 | 0.1 |
| Public sector | Mar qtr 01 | -0.4 | 0.3 | -0.3 | -0.6 | 1.4 | 0.5 | 1.8 | 0.4 | — |
| Total | Mar qtr 01 | -0.9 | 1.6 | 1.0 | -0.5 | 2.4 | 2.1 | -0.9 | 1.5 | 0.1 |
| STATE ACCOUNTS | | | | | | | | | | |
| Gross state product (chain volume measures)(a) | 1999-00 | 3.7 | 4.6 | 6.3 | 3.5 | 4.6 | 1.1 | — | 4.9 | 4.3 |
| PRIVATE NEW CAPITAL EXPENDITURE | | | | | | | | | | |
| Total (at current prices), trend series | Mar qtr 01 | -6.6 | -2.7 | -8.4 | -0.3 | 10.7 | -7.5 | 36.4 | 15.3 | -2.5 |
| BUILDING APPROVALS | | | | | | | | | | |
| Dwelling units approved, original series | May 01 | 38.8 | 48.2 | 58.1 | 37.7 | 22.6 | 97.1 | -26.4 | 57.1 | 42.4 |
| Dwelling units approved, trend series | May 01 | 0.8 | 0.6 | 5.6 | 3.3 | 2.9 | 7.1 | 16.3 | 5.0 | 3.1 |
| Value of non-residential building approved, original series | May 01 | 22.7 | 49.1 | 186.1 | 136.3 | -53.5 | 142.7 | 364.5 | -8.6 | 28.9 |
| Value of all buildings approved, original series | May 01 | 33.1 | 46.3 | 73.9 | 78.3 | -28.9 | 109.2 | 65.1 | 33.9 | 33.6 |
| ENGINEERING CONSTRUCTION, original series | | | | | | | | | | |
| Value of engineering construction work done | Dec qtr 00 | -8.9 | -1.1 | -6.8 | 3.8 | 21.8 | 35.1 | 8.4 | -24.1 | -2.7 |
| AVERAGE WEEKLY EARNINGS, trend series | | | | | | | | | | |
| Full-time adult ordinary time earnings | Feb 01 | 0.5 | 0.9 | 1.1 | 1.7 | 1.0 | -0.3 | 0.4 | 0.7 | 0.8 |
| RETAIL TRADE TURNOVER, trend series | May 01 | 0.7 | 0.6 | 0.9 | 0.7 | 0.4 | 0.4 | — | 0.4 | 0.7 |
| TOURIST ACCOMMODATION, original series | | | | | | | | | | |
| Room nights occupied | Mar qtr 01 | -2.2 | 5.2 | -9.7 | -0.8 | -7.2 | 24.3 | -20.5 | -1.6 | -3.4 |
| Room occupancy rate | Mar qtr 01 | -1.8 | 2.7 | -4.7 | 1.6 | -2.8 | 14.6 | -10.5 | 0.4 | -1.1 |
| NEW MOTOR VEHICLE REGISTRATIONS, trend series | May 01 | -1.7 | -1.2 | -1.3 | -0.7 | -2.4 | -2.7 | 1.0 | -1.4 | -1.5 |
| | Latest period | Syd. | Melb. | Bris. | Adel. | Perth | Hob. | Dar. | Canb. | Aust. |
| CONSUMER PRICE INDEX(b) | | | | | | | | | | |
| Food | Mar qtr 01 | 3.4 | 3.0 | 3.9 | 3.9 | 1.9 | 1.7 | 1.7 | 2.6 | 3.1 |
| Housing | Mar qtr 01 | 0.3 | 0.8 | 0.1 | 0.5 | -0.2 | 1.0 | -0.5 | 0.8 | 0.5 |
| Transportation | Mar qtr 01 | 0.3 | 0.4 | 0.3 | -0.4 | -0.2 | 0.8 | 0.6 | -0.4 | 0.2 |
| All Groups | Mar qtr 01 | 1.4 | 1.1 | 0.8 | 1.2 | 0.6 | 0.7 | 0.1 | 0.8 | 1.1 |
| AVERAGE RETAIL PRICES | | | | | | | | | | |
| Milk, carton, supermarket sales | Mar qtr 01 | 1.5 | -0.7 | — | 1.5 | 0.7 | — | -0.7 | 2.4 | .. |
| Bread, white loaf, sliced, supermarket sales | Mar qtr 01 | 2.9 | 2.8 | 4.5 | 5.5 | 4.4 | 5.9 | 2.6 | 4.7 | .. |
| Beef, rump steak | Mar qtr 01 | 5.0 | 6.4 | 4.4 | 0.4 | 0.2 | 3.4 | 2.0 | 4.1 | .. |
| Chicken, frozen | Mar qtr 01 | 1.9 | 14.2 | 15.0 | 23.5 | 1.7 | 0.3 | -2.8 | 3.8 | .. |
| Potatoes | Mar qtr 01 | 5.8 | 1.3 | 16.5 | 14.8 | 0.7 | 10.6 | -0.7 | 4.6 | .. |
| Coffee, instant (jar) | Mar qtr 01 | 1.7 | 3.9 | -9.1 | 5.8 | 7.8 | 4.2 | -3.8 | 0.5 | .. |
| Scotch nip, public bar | Mar qtr 01 | 1.6 | 0.5 | 1.6 | 0.5 | 1.2 | 3.0 | 0.8 | 1.6 | .. |
| Private motoring petrol | | | | | | | | | | |
| Super grade(c) | Mar qtr 01 | -4.2 | -3.0 | -3.7 | -3.3 | -4.1 | -0.8 | -4.1 | -2.9 | .. |
| Unleaded | Mar qtr 01 | -4.4 | -3.2 | -3.8 | -3.3 | -4.5 | -1.1 | -4.5 | -2.9 | .. |

(a) Experimental series. Users are cautioned these estimates are derived indirectly by calculating a deflator from the expenditure components of the state series concerned. Therefore, in general, the sum of the state estimates does not equal the estimates for Australia. Reference year for chain volume measures is 1998-99.

(b) Base year: 1989-90 = 100.0. The 14th Series Australian Consumer Price Index was introduced September quarter 2000. Some changes include an updated commodity classification and weighting pattern and changes in composition of some groups. For more details of changes, refer to *Information Paper: Introduction of the 14th Series Australian Consumer Price Index* (Cat. no. 6456.0) released 29 September 2000.

(c) Includes lead replacement petrol where applicable.

INDEX OF FEATURE ARTICLES PUBLISHED IN ACT BUSINESS INDICATORS

| <i>Issue</i> | <i>Title</i> | <i>Page reference</i> |
|--------------|--|-----------------------|
| Jul 2001 | Motor Vehicle Use in the ACT | 7 |
| Jun 2001 | Cleaning Services Industry in the ACT | 7 |
| May 2001 | Working Arrangements and Superannuation in the ACT | 6 |
| Apr 2001 | Job Search Experience of Unemployed Persons in the ACT | 7 |
| Mar 2001 | Population Growth in the ACT | 6 |
| Feb 2001 | Labour Mobility in the ACT | 7 |
| Jan 2001 | Child Care Industry in the ACT | 7 |
| Dec 2000 | Cafes and Restaurants Industry in the ACT | 6 |
| Dec 2000 | Legal Services Industry in the ACT | 8 |
| Nov 2000 | Manufacturing Industry in the ACT | 6 |
| Oct 2000 | Computing Services Industry 1998–99 | 6 |
| Sep 2000 | Motor Vehicle Use in the ACT | 6 |
| Aug 2000 | Household Expenditure on Goods and Services in the ACT | 6 |
| Jul 2000 | Small Business in the ACT | 6 |
| Jun 2000 | Sports Attendance | 7 |
| Jun 2000 | Attendance at Selected Cultural Venues | 8 |
| May 2000 | Employee Earnings, Benefits and Trade Union Membership | 7 |
| Apr 2000 | Emergency Services and Public Transport Usage in the ACT | 8 |
| Mar 2000 | Forms of Employment | 6 |
| Feb 2000 | Job Search Experience of Unemployed Persons | 6 |
| Jan 2000 | Transition from Education to Work, May 1999 | 6 |
| Dec 1999 | Structure of the ACT Economy | 6 |
| Dec 1999 | Participation in Sport and Physical Activities | 7 |
| Nov 1999 | Crime and Safety in the ACT | 6 |
| Oct 1999 | Labour Force Experience in the ACT | 6 |
| Sep 1999 | Career Experience in the ACT | 7 |
| Sep 1999 | Carers in the ACT | 9 |
| Aug 1999 | Stock of Human Resources in Science and Technology | 6 |
| Jul 1999 | Persons with a Disability in the ACT | 6 |
| Jun 1999 | Participation in Education in the ACT | 6 |
| May 1999 | Transition from Education to Work of Persons Aged 15–64 in the ACT | 7 |
| Apr 1999 | Persons Not in the Labour Force in the ACT | 6 |
| Mar 1999 | Education and Labour Force Status of the ACT's Young People | 6 |
| Feb 1999 | Income and Living Standards in the ACT | 6 |
| Jan 1999 | Education and Training Experience of ACT Resident | 6 |
| Dec 1998 | Families and Labour Force Status in the ACT | 6 |
| Nov 1998 | Retrenchment and Redundancy in the ACT | 6 |
| Nov 1998 | Retail Turnover in the ACT | 9 |
| Oct 1998 | Research and Experimental Development in the ACT | 6 |
| Sep 1998 | Labour Force Mobility in the ACT | 6 |
| Sep 1998 | Income Distribution in the ACT | 8 |
| Aug 1998 | ACT Investors in Rental Dwellings | 6 |
| Jul 1998 | Retirement and Retirement Intentions | 6 |
| Jun 1998 | Profile of Small Business in the ACT | 7 |

FOR MORE INFORMATION...

- INTERNET* **www.abs.gov.au** the ABS web site is the best place to start for access to summary data from our latest publications, information about the ABS, advice about upcoming releases, our catalogue, and Australia Now—a statistical profile.
- LIBRARY* A range of ABS publications is available from public and tertiary libraries Australia-wide. Contact your nearest library to determine whether it has the ABS statistics you require, or visit our web site for a list of libraries.
- CPI INFOLINE* For current and historical Consumer Price Index data, call 1902 981 074 (call cost 77c per minute).
- DIAL-A-STATISTIC* For the latest figures for National Accounts, Balance of Payments, Labour Force, Average Weekly Earnings, Estimated Resident Population and the Consumer Price Index call 1900 986 400 (call cost 77c per minute).

INFORMATION SERVICE

Data which have been published and can be provided within five minutes are free of charge. Our information consultants can also help you to access the full range of ABS information—ABS user-pays services can be tailored to your needs, time frame and budget. Publications may be purchased. Specialists are on hand to help you with analytical or methodological advice.

- PHONE* **1300 135 070**
- EMAIL* **client.services@abs.gov.au**
- FAX* 1300 135 211
- POST* Client Services, ABS, GPO Box 796, Sydney 1041

WHY NOT SUBSCRIBE?

ABS subscription services provide regular, convenient and prompt deliveries of ABS publications and products as they are released. Email delivery of monthly and quarterly publications is available.

- PHONE* 1300 366 323
- EMAIL* subscriptions@abs.gov.au
- FAX* 03 9615 7848
- POST* Subscription Services, ABS, GPO Box 2796Y, Melbourne 3001



2130380007011
ISSN 1320-808X

RRP \$17.50